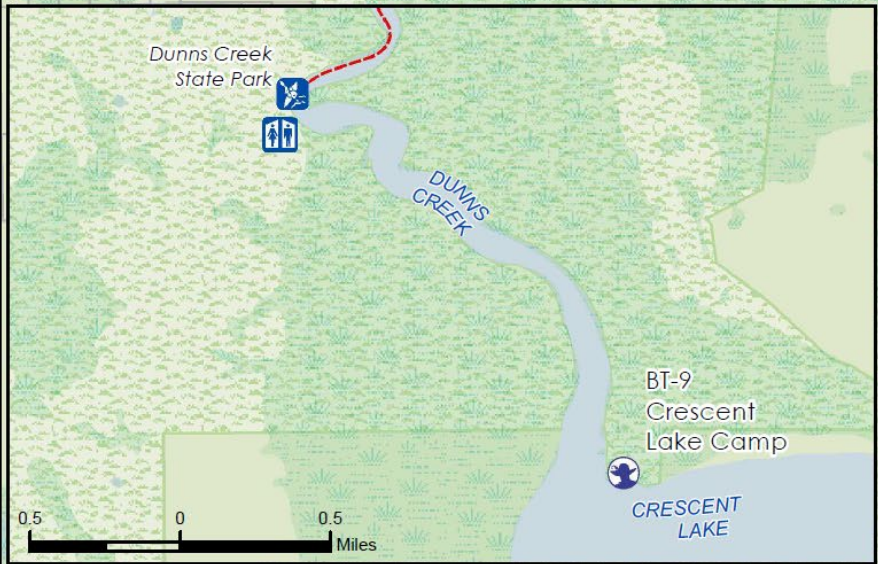
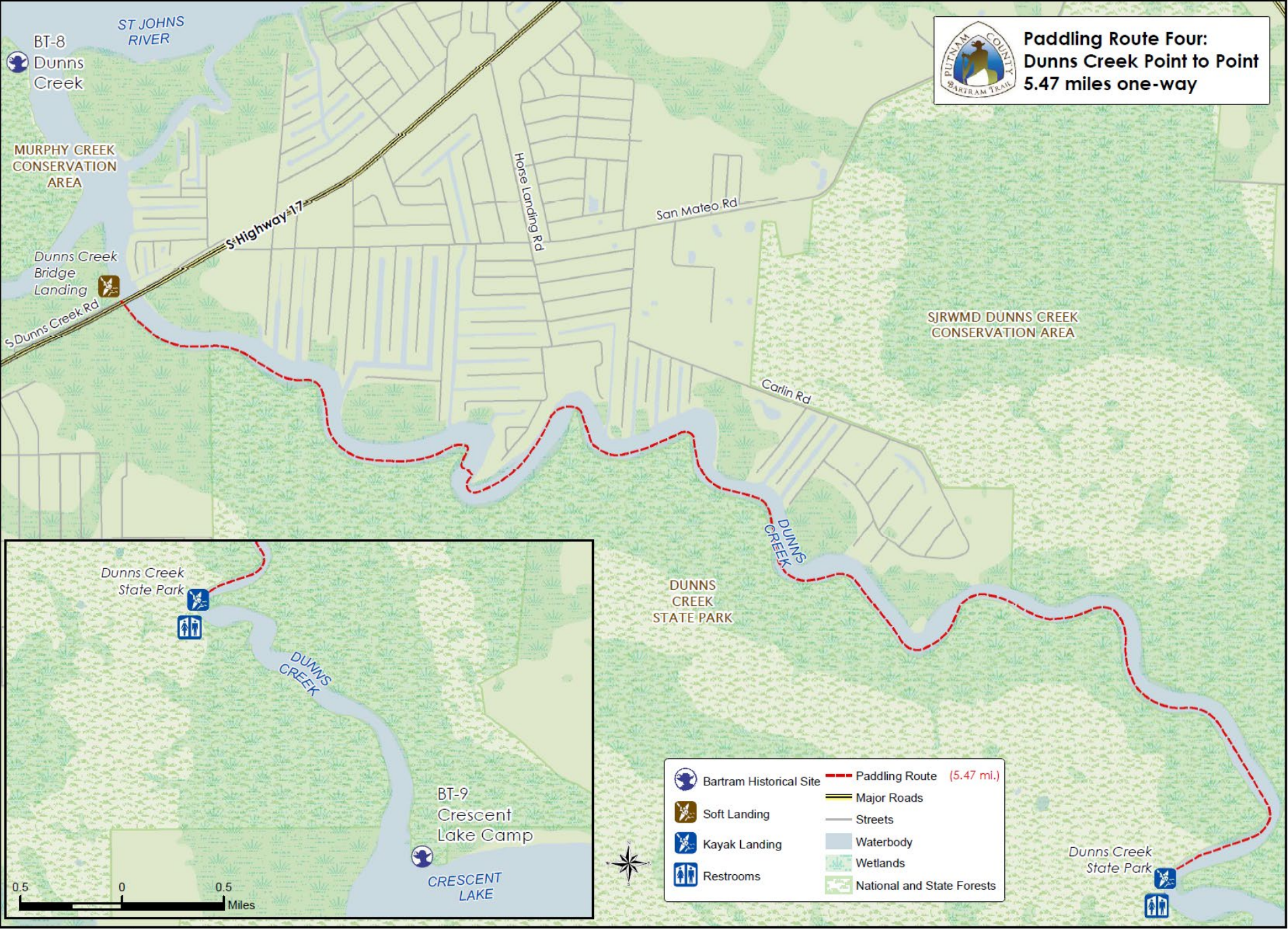


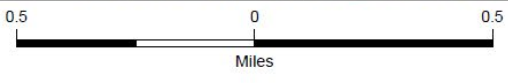
**Putnam County Bartram Trail**

**Padding Route Four:  
Dunns Creek Point to Point  
5.47 miles one-way**



	Bartram Historical Site		Padding Route (5.47 mi.)
	Soft Landing		Major Roads
	Kayak Landing		Streets
	Restrooms		Waterbody
			Wetlands
			National and State Forests

PROJECT: 133m23	ISSUED: 8/27/2016	BY: BCCC
DATE: 8/27/2016	DATE: 8/27/2016	DATE: 8/27/2016
FILE: N:\Projects\Bartram\MOO\IndividualPaddingRoutes\Route4_DunnsCreekInset.mxd		
DRAWN: Putnam County GIS Office, Putnam County Bartram Trail Committee		
REVISION:		



Disclaimer: "This map is for reference only. Data provided are derived from multiple sources with varying levels of accuracy. Putnam County and its employees disclaim all responsibility for the accuracy or completeness of the data shown hereon."

## **Paddling Route Four: Dunns Creek Point to Point**

**Put In:** Lat/Long 29° 31.542'N 81° 35.363'W Entrance to Dunns Creek Park (corner of Sisco Road and Parkin Road) Lat/Long 29° 33.083'N 81° 34.364'W - Kayak Launch in Park

**Take Out:** Lat/Long 29° 34.650'N 81° 37.614'W - Base of Dunns Creek Bridge

**Distance:** 5.5 miles    **Difficulty:** Intermediate    **Estimated Time:** 3 hours

### **Coordinates:**

Dunns Creek State Park Contact Number:

BT-9: N29° 31.988' W81° 33.260'

Dunns Creek State Park soft launch: 29° 33.083'N 81° 34.364'W Putnam County boat ramp at Dunns Creek Bridge: 29° 34.650'N 81° 37.

**Narrative Description:** This is a point-to-point paddle and requires a 10.5 mile shuttle. There are two distance options; 5.5 miles and 9.5 miles depending on the number of BT Sites visited. Option one covers most of Dunns Creek while Option 2 covers the entire length of the Creek and includes a visit to BTS 9 on Crescent Lake, 2 miles south of the Dunns Creek State Park (CCSP) soft landing.

Dunns Creek is a popular fishing destination and boat traffic should be expected. Because of the many bends in the Creek and the densely vegetated shoreline, visibility is limited and paddlers should beware of powerboats. Fortunately, powerboats can be heard a good distance off so paddlers can avoid being in mid-channel when they pass. As always, it is recommended that paddlers stick to the shoreline and avoid paddling in mid- channel.

The launch for this route is from the soft landing at DCSP. Unfortunately, this new State Park is not yet open to the general public. Consequently, paddlers wishing to use the soft landing for their departure will need to contact the Park to gain entrance. After launching from the DCSP, follow the Creek as it heads in a northeasterly direction. Soon, the winding Creek will flow generally in northwesterly direction as it meanders through the adjacent wooded wetlands towards its mouth at the St. Johns River.

All of the land on the west shore of Dunns Creek from Crescent Lake to within 500 yards of the US 17 crossing is in public ownership and part of the DCSP. The first 3.5 miles of the east shoreline of Dunns Creek (that portion where there is no development) is also in public ownership and part of the St. Johns River Water Management District's Dunns Creek Conservation Area. Consequently, much of the Creek remains in the same natural state that existed when John and William observed it in 1766. Continue in Dunns Creek 5.5 miles to the US 17 bridge crossing. The landing point is the public boat ramp is on the west shore at the foot of the bridge. The parking area at the bridge is not paved but is generally in good condition. There are no other amenities at the ramp. While Dunns Creek itself is a Bartram Trail Site (BT-8), the BT marker is located on the shoreline of Murphy Island near the Creek's confluence with the St. Johns River.

If you would like to include a second Site, BTS-9 is approximately two miles upstream of the DCSP launch site and is located on the north shoreline of Crescent Lake. The marker is can be found just east of the Lake's entrance to Dunns Creek. Paddling upstream (south) from the launch site to BTS 9 and back adds 4 miles to this paddle for total distance of 9.5 miles. Though BTS-9 is on the shoreline of Crescent Lake, its proximity to the Creek allows paddlers to reach the site with only minimal exposure to the open-water of the Lake.